

Taobh-an-Allt

www.elsas-bedandbreakfast.co.uk

Bed & Breakfast Accommodation
Lochcarron, Wester Ross, NW Highlands



Comfortable modern bungalow in quiet semi-rural position,
but within a short distance of all village amenities.

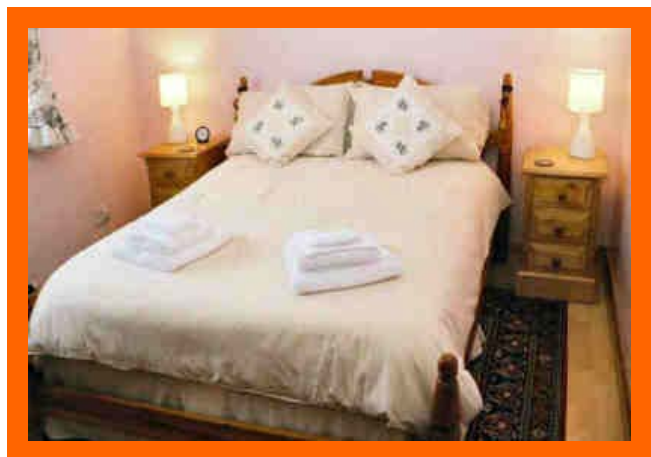


Taobh-an-Allt is a modern bungalow with bed and breakfast accommodation for up to 4 people, and is therefore well suited to couples and small families as well as singles.

The sleeping accommodation comprises one double bedroom and one twin room. The rooms have colour TV and hospitality trays with tea and coffee making facilities. There is a shared bathroom, with bath, WC, and electric shower.

The dining room provides comfortable seating for up to 4 people.

Last, but not least, is the view which can only be described as stunning! The photo to the right, taken on a misty golden autumn day, shows this view as seen from the roadside just in front of the house. Although the bungalow is situated away from the main part of Lochcarron village, we are only a short distance from the shops, pub, restaurant, bank, etc.



Full Scottish breakfast is served, with a selection of fruit juices, cereals, yoghurt, toast, jam and marmalade, together with tea or fresh ground coffee. Vegetarian and Continental breakfasts can also be provided.

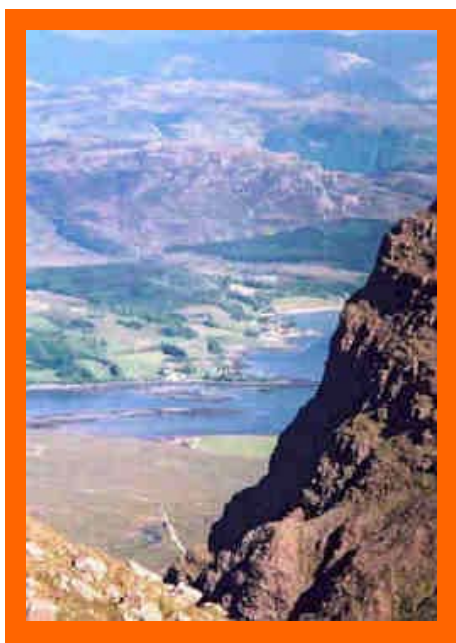
Our tariff is £23 per person per night.

Lochcarron is situated on the West Coast of Scotland, 63 miles due west of Inverness, and lies amidst magnificent Highland scenery, some of the finest in the British Isles.

To the right is a view of the village from the south shore of Lochcarron, with the snow-capped mountains of Applecross in the background.



Lochcarron is an excellent centre for touring. To the immediate north and west lies the Applecross peninsula which is approached via the Bealach na Ba, the Pass of the Cattle, one of the highest roads in Britain. This road climbs from sea level to a height of 2,053 feet, and provides some spectacular views along the way.



A 20-minute walk from the car park at the summit affords some even more magnificent views in all directions, especially towards the Isles of Skye and Raasay to the west. The photo to the left shows the view down towards Kishorn from the Applecross tops.

A little further to the north and west are the Torridon Hills, always a favourite area for walkers and climbers, and the Beinn Eighe National Nature Reserve; also, beautiful Loch Maree, and Gairloch with its lovely white sandy beaches and links' golf course. Further north up the coast from Gairloch are Inverewe Gardens which, despite being on a latitude more northerly than Moscow, contain exotic plants from all over the world, courtesy of the Gulf Stream.

To the south and west are Loch Alsh and the new Skye Bridge, and the magnificent scenery of Glenelg (with its Pictish brochs) and Kintail. The road over to Glenelg via Mam Ratagan provides, once again, some very spectacular views. Nearer to Lochcarron are the pretty villages of Shieldaig and Plockton, and the gardens at Attadale just across the loch. Lochcarron is surrounded by excellent walking country with many magnificent views.

Taobh-an-Allt is located in a very quiet semi-rural side road on the edge of Lochcarron village - the following link leads to a "zoomable" map of the area.

Lochcarron is reached from the south by one of two main routes:-

- A9 north from Inverness, thence via the A835 to Garve, the A832 to Achnasheen, and finally the A890/A896 to Lochcarron.
- From Fort William via the A82 north to Invergarry, and then via the A87 (towards Kyle of Lochalsh) and the A890/A896 to Lochcarron.

For Bookings, Availability, General Information, contact:-

Mrs Elsa Ward

Taobh-an-Allt, Upper Slumbay, Lochcarron, Strathcarron, IV54 8YG, UK

Tel/Fax:- 01520 722377

E-Mail:- johnandelsa1@aol.com

Website:- www.elsas-bedandbreakfast.co.uk